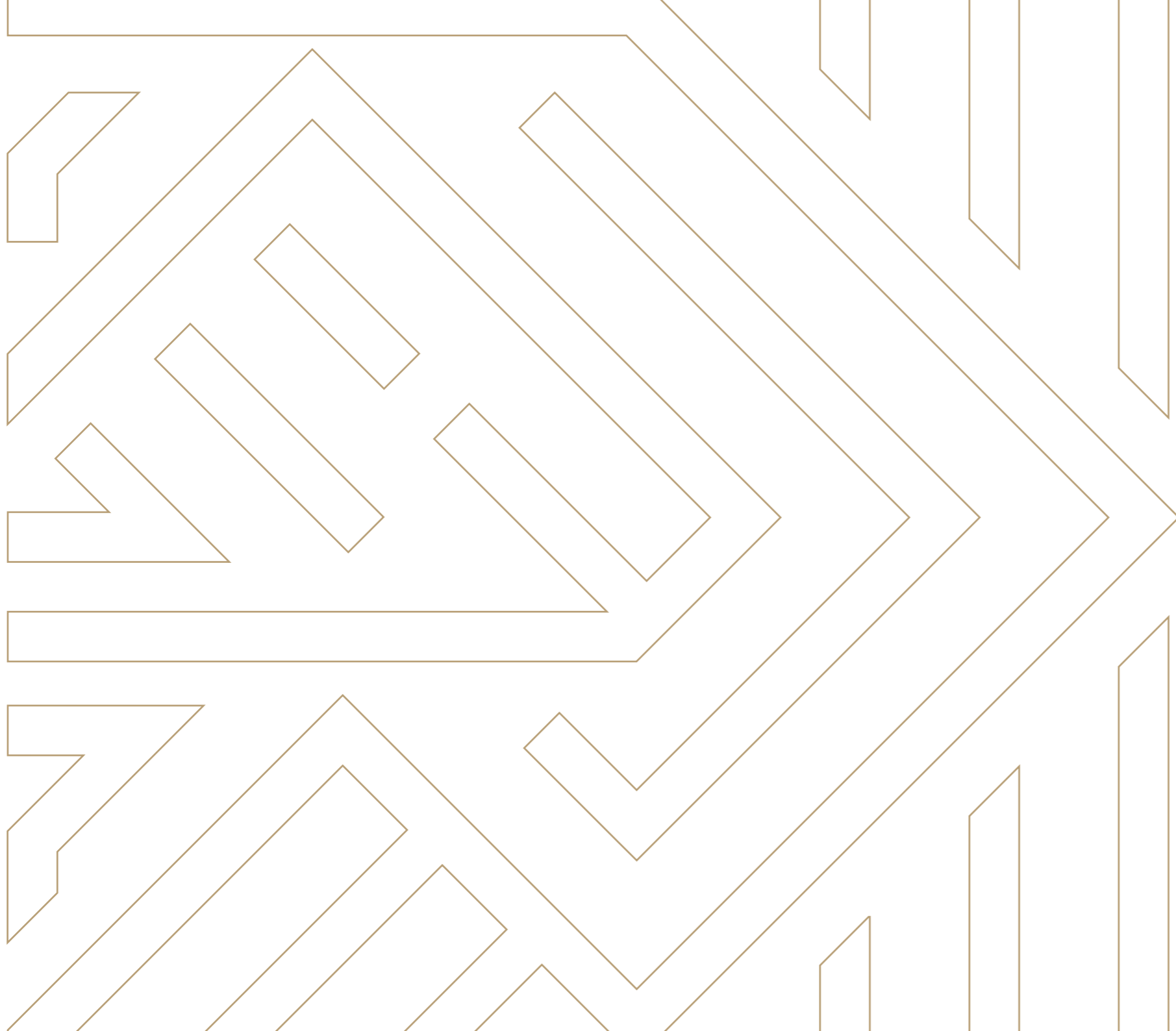




RESIDENCES



ACROSS THE STREET FROM THE ORDINARY

Montenegro's highest resort is located in the southern part of Bjelasica mountain range, on a surface of 27ha.

Once developed, the resort will consist of two different settlement zones with high class hotels and apartments and a zone of private exclusive chalets in between.

All the units within the hotel settlement will be serviced by the hotels, offering a wide spectrum of amenities and year-round activities.

COME UP. SLOW DOWN.

The zone of ski trails interpolated in the settlement ensures ideal accessibility for the skiers and provides all accommodation in the resort with the ski in ski out access.

The resort will be accessible from the Podgorica airport in 35 minutes, making it one of the closest ski resorts to an international airport in Europe.





Experience the ultimate
skiing convenience.

RESIDENCES AT THE SKI SLOPE

Check in, leave your baggage and go! The first ski-in & ski-out concept in Montenegro offers you to glide back to your hotel at the end of a long day on the slopes. The superior location will make your ski holiday that extra bit relaxing and enjoyable.



BECOME A TRUE MONTENEGRIN!

Ski resort K16 will be a part of the Government golden visa program, allowing you to acquire the Montenegrin passport with the purchase of the unit in the resort.

€250,000

MINIMUM INVESTMENT
IN REAL ESTATE

€100,000

ADDITIONAL DONATION
TO THE GOVERNMENT

VISA FREE ENTRY
IN 122 COUNTRIES

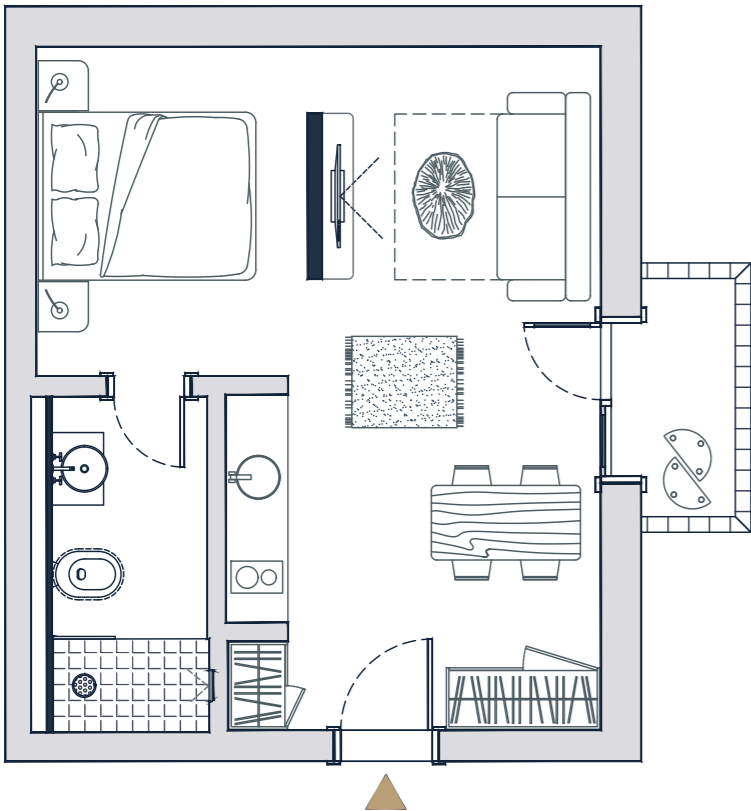
APPLICATION FEE:

€15,000 for application
€10,000 for up to 4 family members
€50,000 for each following family member



K16 RESIDENCES / HOTEL S

K16 - 1 BEDROOM RESIDENCES

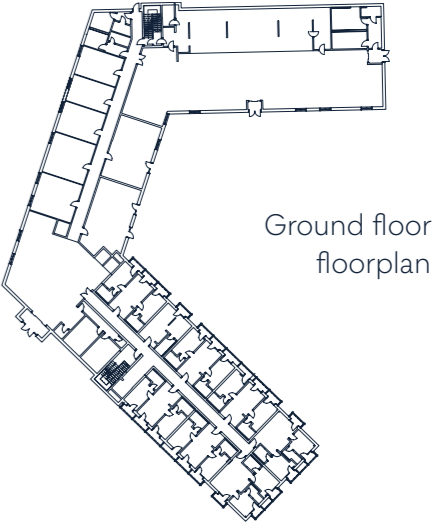


DESCRIPTION	ROOM	SIZE	M²
	Living room		29,25
	Bathroom		4,87
	Terrace		1,75

TOTAL SIZE
35,87m²

34,12m²
without terrace

PRICE:
€ 250,000

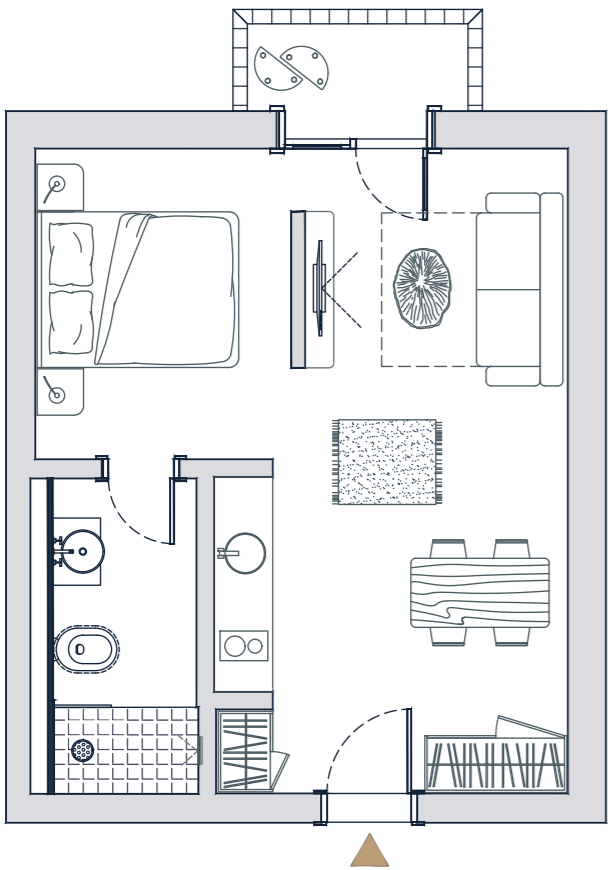


Ground floor
floorplan



1st, 2nd and
attic floorplan

K16 - 1 BEDROOM RESIDENCES

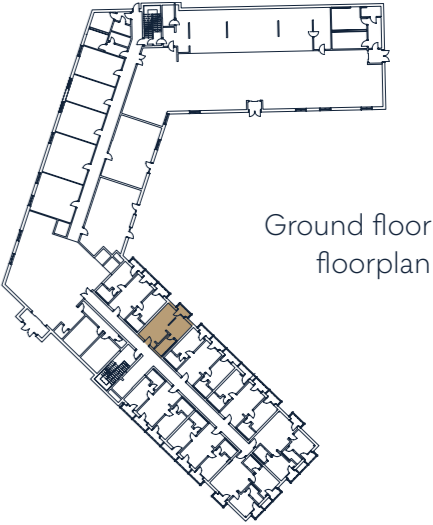


DESCRIPTION	ROOM	SIZE	M²
	Living room		29,25
	Bathroom		4,87
	Terrace		1,75

TOTAL SIZE
35,87m²

34,12m²
without terrace

PRICE:
€ 250,000

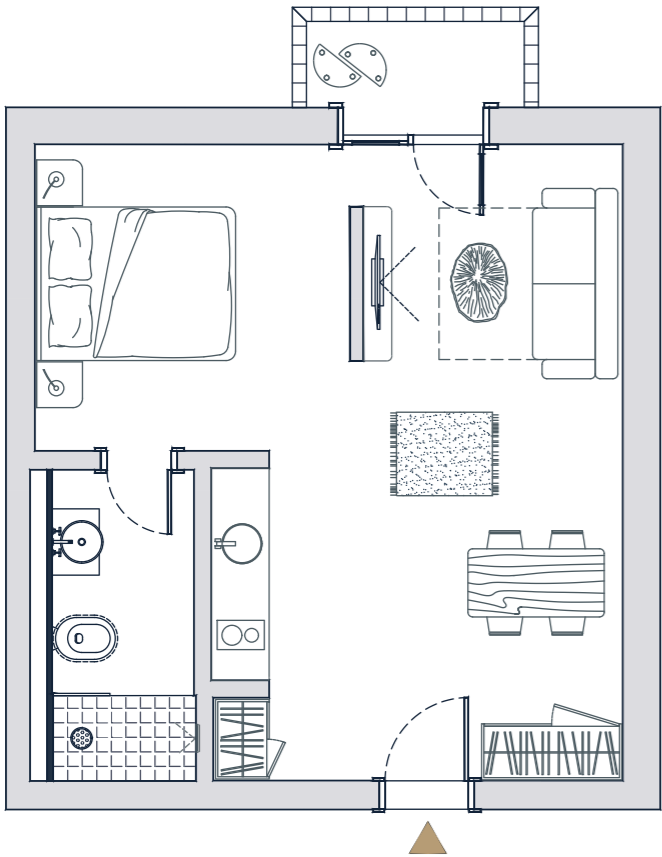


Ground floor
floorplan



1st, 2nd and
attic floorplan

K16 - 1 BEDROOM RESIDENCES

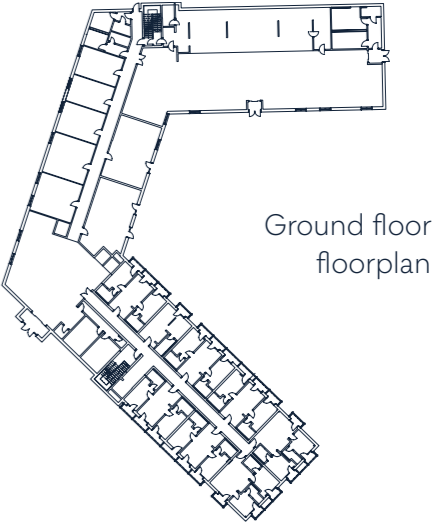


DESCRIPTION	ROOM	SIZE	M²
	Living room		34,09
	Bathroom		4,87
	Terrace		1,75

TOTAL SIZE
40,71m²

38,96m²
without terrace

PRICE:
€ 260,000

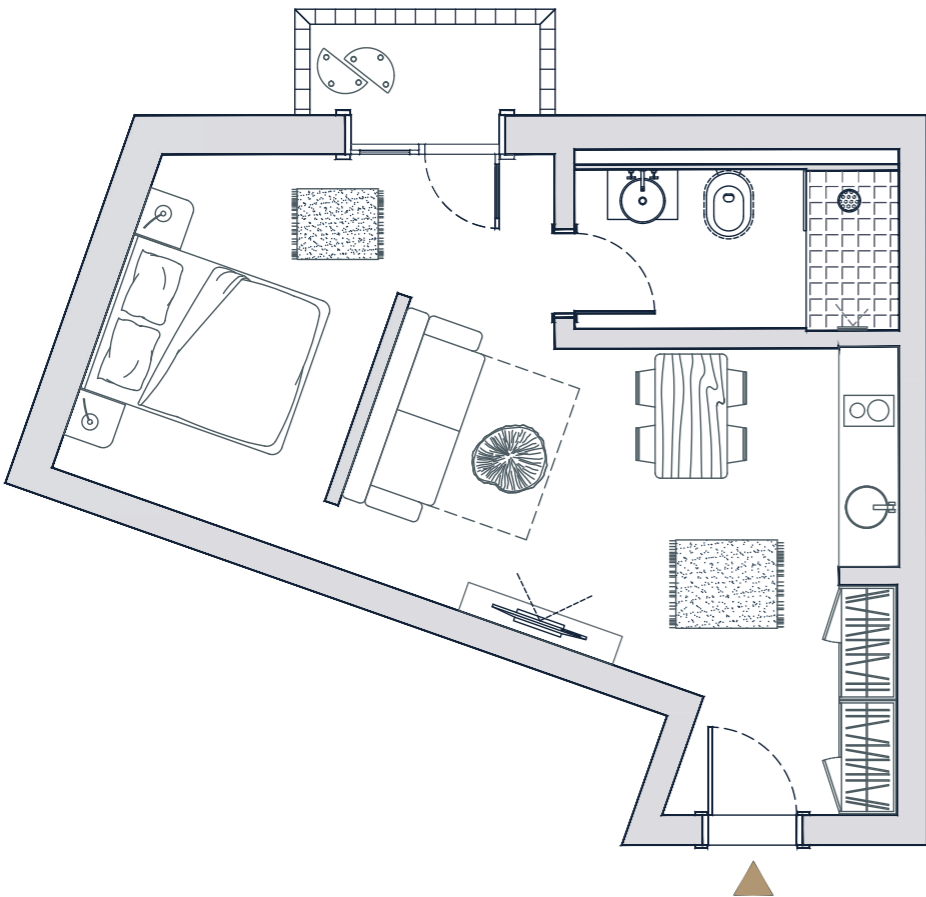


Ground floor
floorplan



1st, 2nd and
attic floorplan

K16 - 1 BEDROOM RESIDENCES



DESCRIPTION	ROOM	SIZE	M²
	Living room		32,10
	Bathroom		5,15
	Terrace		1,75

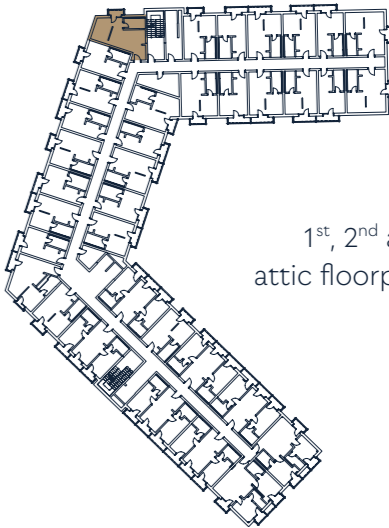
TOTAL SIZE
39,00m²

37,25m²
without terrace

PRICE:
€ 260,000

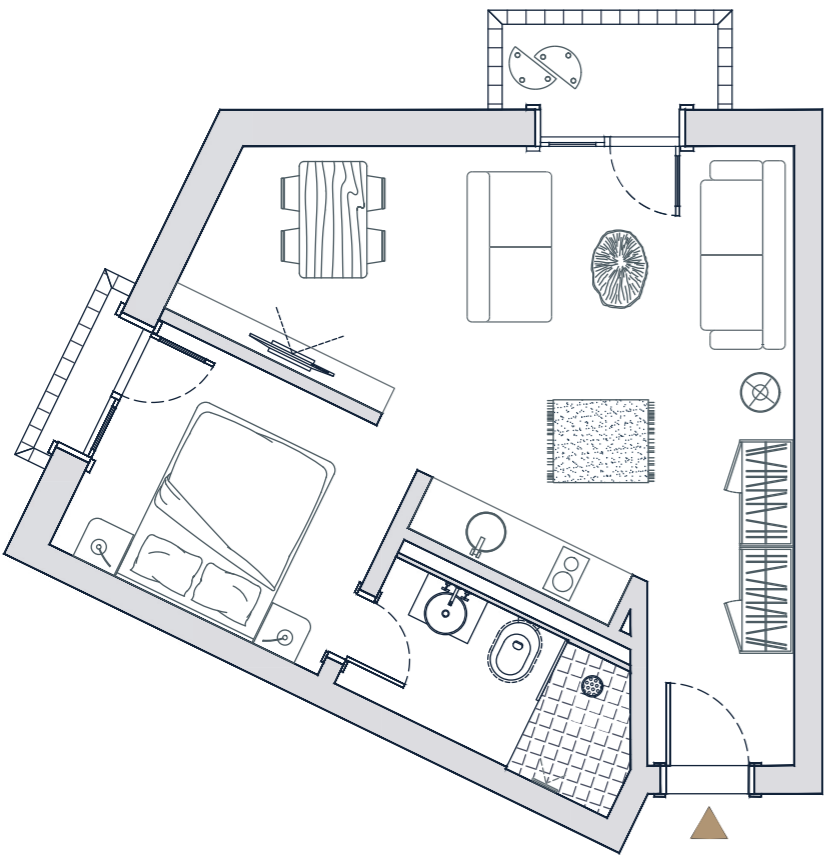


Ground floor
floorplan



1st, 2nd and
attic floorplan

K16 - 1 BEDROOM RESIDENCES

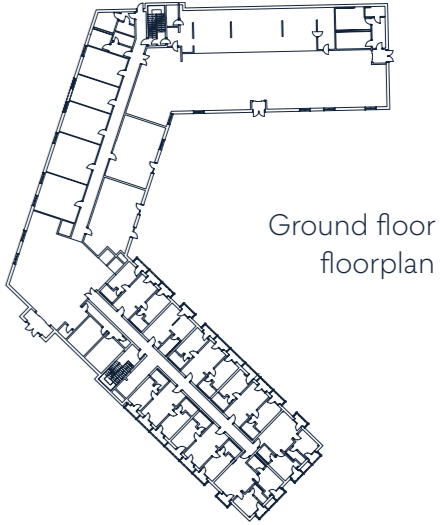


DESCRIPTION	ROOM	SIZE	M ²
	Living room		35,86
	Bathroom		4,65
	Terrace		2,25

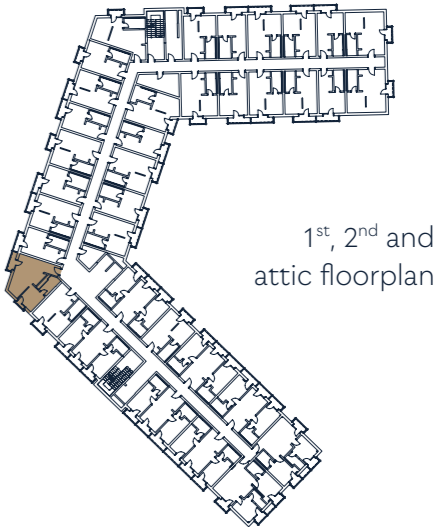
TOTAL SIZE
42,76m²

40,51m²
without terrace

PRICE:
€ 265,000

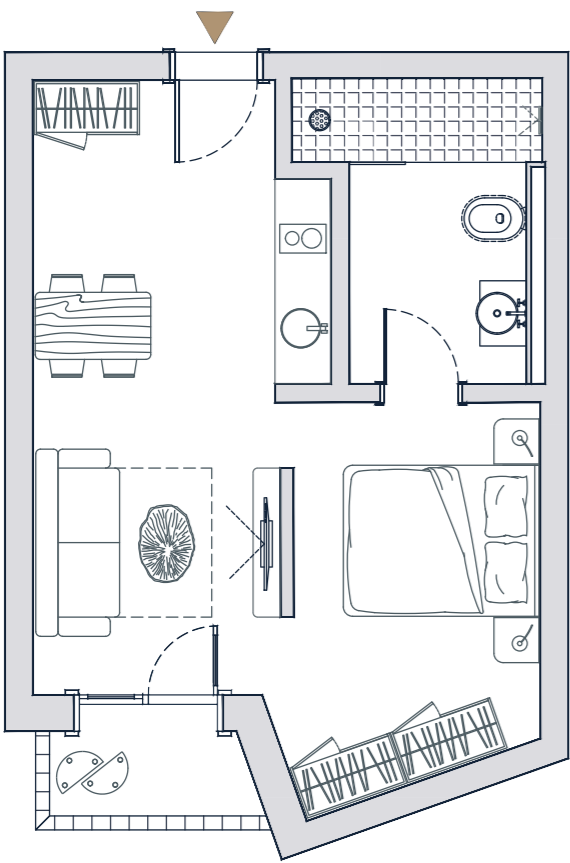


Ground floor
floorplan



1st, 2nd and
attic floorplan

K16 - 1 BEDROOM RESIDENCES

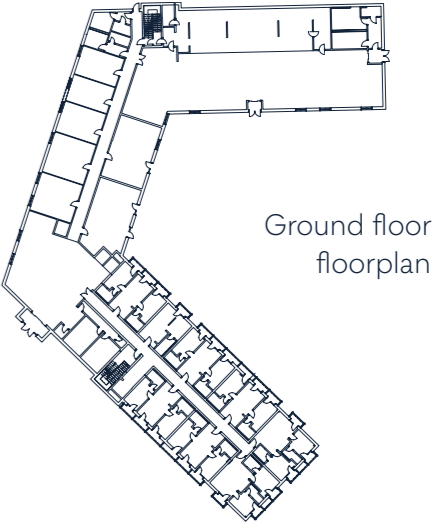


DESCRIPTION	ROOM	SIZE	M²
	Living room		29,81
	Bathroom		6,95
	Terrace		1,68

TOTAL SIZE
38,44m²

36,76m²
without terrace

PRICE:
€ 260,000



Ground floor
floorplan



1st, 2nd and
attic floorplan

**Endless possibilities for a new era
of living the dream life in the mountains.**

K16 MOUNTAIN GETAWAY

CONTACT INFORMATION

sales@k16resort.com www.k16resort.com

